

Mixed-Media Fiber Hubs

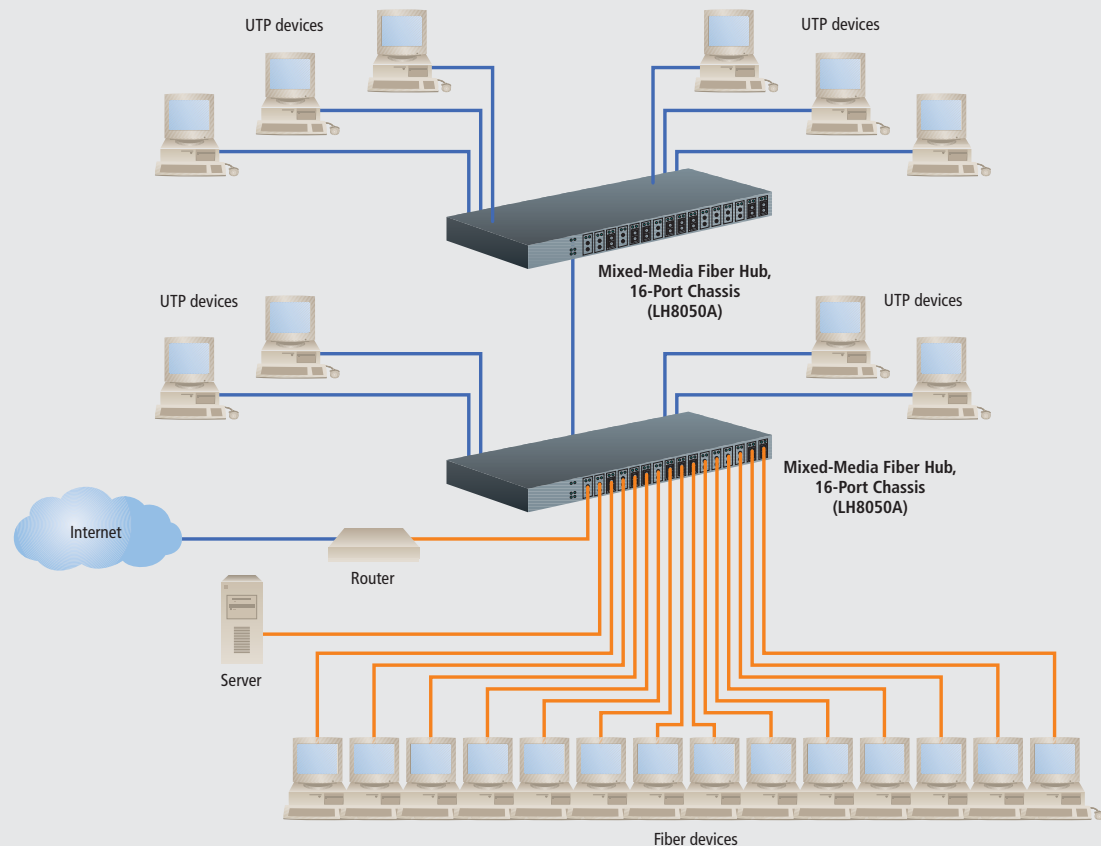


Get the flexibility you need for Ethernet network “fiber-to-the-desktop” applications. This modular hub supports a variety of 10- and 100-Mbps fiber port modules.

FEATURES

- Supports many fiber port types.
- All RJ-45 ports are autosensing for 10 or 100 Mbps.
- Complies with 10BASE-T, 10BASE-FL, 100BASE-TX, and 100BASE-FX Ethernet standards, plus it functions as a full Class II+ repeater.
- There's even a module for a fast uplink to a file server or backbone!

Connect both 10-Mbps and 100-Mbps devices to your mixed-media network.



OVERVIEW

This is the must-have product for anyone who's gradually transitioning a small- to medium-sized network from 10-Mbps Ethernet to 100-Mbps Fast Ethernet. The Mixed-Media Fiber Hub accepts either 10- or 100-Mbps signals over fiber or copper cables, configured on a per-port basis.

Here's how it works. The hub supports two shared traffic domains—one at 10 Mbps and one at 100 Mbps. An internal bridge connects the two domains.

Each fiber port handles either 10- or 100-Mbps speeds. Mix and match any combination of front-mounted port modules (ST, SC, FC, MT-RJ, multimode, or single-mode) to fit your networking needs. Each RJ-45 port is also independently auto-sensing for 10/100 speed and adapts to match the speed of the connected devices.

And if 16 ports just aren't enough, you can add 16 more autosensing 10/100 twisted-pair ports: Just connect a Dual-

Speed 10/100 Stackable Hub (LH8016A-C). Stacking the two hubs creates one 32-port hub. You can also stack one or two of the 16-Port Add-On Chassis (LH8050A-C) with a Base Chassis for a total of up to 48 ports.

The chassis is available with an additional switch-port module for switched 10- or 100-Mbps connection to high-speed devices, creating a third collision domain.

The Mixed-Media Fiber Hub includes the 16-Port Mixed-Media Fiber Hub Chassis (with additional switch port module installed, if ordered), a users' manual, an AC power cord (115-VAC), and one set of metal ears for optional 19" rackmounting.

NOTE: You can also stack these hubs with our 16-Port Dual-Speed 10/100 Stackable Hubs. The 16-Port Base Chassis is compatible with the Dual-Speed Master Hub (LH8016A-M), and the 16-Port Add-On Chassis is compatible with the Dual-Speed Client Hub (LH8016A-C).



LH8050A

TECH SPECS

Auto-Reconnect — Occurs after one packet of error-free reception

Bridging — Store-and-forward processing; 8 KB, self-learning address table; 2-MB dynamic packet buffers

Compliance — CE, FCC Part 15 Subpart B Class A, UL® Listed (UL 1950), cUL

Cooling Method — Fan-cooled, internal @ 9 cfm

Enclosure — Rugged sheet metal, suitable for standalone or rackmounting; metal brackets for 1U rackmounting included

Manual Switches — Uplink switch: LH8056C-UP module only (for crossover and cascading);
Auto/100 switch: LH8056C and LH8056C-UP modules (for autonegotiation or fixed 100-Mbps speed operation)

Maximum Ethernet Segment (or Domain) Lengths —
10BASE-T (Category 3, 4, 5 UTP): 328 ft. (100 m);
100BASE-TX (Category 5 UTP): 328 ft. (100 m);
Shielded twisted pair: 492 ft. (150 m);
10BASE-FL multimode fiber optic: 6562 ft. (2 km);
10BASE-FL single-mode fiber optic: 32,810 ft. (10 km);
100BASE-FX half-duplex multimode: 1350 ft. (412 m);
100BASE-FX full duplex multimode: 6562 ft. (2 km);
100BASE-FX half-duplex single-mode: 1350 ft. (412 m);
100BASE-FX full duplex single-mode: 49,215 ft. (15 km)

Partitioning — Enforced after 63 consecutive collisions

PDV (100 MB Path Delay Value) — 80BT exceeds Class II specification

Speed — 10 or 100 Mbps per port

Standards — IEEE 802.3u: 100BASE-TX, 100BASE-FX;
IEEE 802.3: 10BASE-T, 10BASE-FL

Connectors — AC power connector: IEC-type, male, recessed;
Modular connectors on a per-port basis;
RJ-45 shielded female ports: 100 Mbps: Category 5 UTP/STP;
10 Mbps: Category 3, 4, 5 UTP/STP;
Fiber ports at 100 Mbps and 10 Mbps; Port modules for all fiber connector types; (2) DB25F stacking connectors

Indicators — Chassis: LEDs: Power, Bridge Inside, Packet Activity 10, Packet Activity 100, Collision 10, Collision 100;
Fiber Port Modules: Link, Activity;
UTP Port Modules: Link, Activity, Speed

Temperature — Operating: 32 to 120°F (0 to 49°C);
Storage: -5 to +140°F (-21 to +60°C)

Relative Humidity — 10 to 95% noncondensing

Power — 90 to 260 VAC (autosensing), 47 to 63 Hz,
25 watts typical (30 watts maximum)

Size — Chassis: 1.75"H x 17"W x 10.5"D (4.5 x 43.2 x 26.7 cm)

Weight — Chassis: 4 lb. (1.8 kg);
Modules: 0.5 lb. (0.2 kg)

TYPICAL APPLICATION

Your department's first priority is a secure network. Because it's possible to eavesdrop with copper wiring, you need a fiber LAN to connect to each desktop and node.

The Mixed-Media Fiber Hub supports all the fiber port types (including the latest models), adapting the fiber LAN to changing technology. The dual-speed feature means there's room for legacy 10-Mbps equipment as well as newer 100-Mbps equipment.

Item	Code
Mixed-Media Fiber Hubs	
16-Port Base Chassis	LH8050A
16-Port Base Chassis with Additional Switch Port Module Installed, 100-Mbps Fiber, Multimode SC	LH8050A-SSC
16-Port Add-On Chassis	LH8050A-C
UTP Port Modules (RJ-45)	
10/100 Modules	LH8056C
10/100-Mbps, Switch-Selectable Uplink	LH8056C-UP
Fiber Port Modules	
10-Mbps, Multimode	
ST® Connector	LE8055C-ST
SC Connector	LE8055C-SC
10-Mbps, Single-Mode	
ST Connector	LE8055C-SMST
100-Mbps, Multimode	
ST Connector	LH8051C-ST
SC Connector	LH8051C-SC
MT-RJ Connector	LH8053C-MTRJ
FC Lucent Port Connector	LH8052C-FC
100-Mbps, Single-Mode	
SC Connector	LH8051C-SMSC
Blank Chassis Panel	LH8057A-PNL

You may also want to order cable...

Bulk Category 5 Solid-Conductor Cable, 2-Pair, PVC	EYN717A
Duplex Fiber Optic Cable, PVC, ST®-ST, Custom Lengths	EFN062-CC

You might also need...

16-Port Dual-Speed 10/100 Stackable Hubs	
Dual-Speed Master Hub	LH8016A-M
Dual-Speed Client Hub	LH8016A-C

(The LH8016A-M is compatible with the 16-Port Base Chassis and the LH8016A-C works with the 16-Port Add-On Chassis.)